

TWO IGNORED RISK FACTORS FOR PARTNER VIOLENCE: NEGLECT AND CORPORAL PUNISHMENT IN CHILDHOOD

Murray A. Straus
 Family Research Laboratory, University of New Hampshire
 Durham, NH 03824 603-862-2594 murray.straus@unh.edu
 Website: <http://pubpages.unh.edu/~mas2>

- Presented at the Inaugural Conference of the International Family Aggression Society, 18th & 19th March, 2008, University of Central Lancashire, Preston, UK
- Other publications on this and related issues can be downloaded from <http://www.pubpages.unh.edu/~mas2>
- The work was supported by National Institute of Mental Health grant T32MH15161 and by the University of New Hampshire

ID89

1

FIVE QUESTIONS TO BE ADDRESSED

1. How prevalent is neglect and corporal punishment in the life history of students in the USA & world-wide?
2. Is corporal punishment by parents and sub-clinical level neglect by parents associated with an increased probability of physical violence against a dating partner?
3. Is the link between these two risk factors and partner violence (PV) mediated by antisocial personality symptoms?
4. Do these relationships apply to:
 - ~ PV by women as well as by men?
 - ~ For differences between nations?
5. What are the policy and practice implications?

ID89

2

DATA FROM THE INTERNATIONAL DATING VIOLENCE STUDY

- 14,252 students
68 universities in 32 nations
All major world regions
- Questionnaire completed in one class period
- Analyses control for
 - * Gender
 - * Age
 - * Length of relationship
 - * Score on social desirability response-set scale
 - * Other, as needed



ID89

3



QUESTION 1a: HOW PREVALENT IS CORPORAL PUNISHMENT THE LIFE HISTORY OF UNIVERSITY STUDENTS?

When I was less than 12 years old, I was spanked or hit a lot by my mother or father
 1 = Strongly Disagree, 2 = Disagree, 3 = Agree, 4 = Strongly Agree

ID89

5

32 Nations in the International Dating Violence Study		PERCENT WHO DID NOT STRONGLY DISAGREE THAT THEY WERE SPANKED OR HIT A LOT BEFORE AGE 12					
		ALL NATIONS MEDIAN: Total = 52, Males = 55, Females = 50					
High Half Of Nations			Low Half Of Nations				
	Total	Male	Female	Total	Male	Female	
Taiwan	74.3	80.7	71.6	Australia	53.2	57.7	52.1
Tanzania	71.1	71.6	68.4	Canada	51.7	55.2	50.2
South Africa	67.6	61.0	67.2	Hungary	51.6	45.6	54.3
Mexico	66.7	70.8	65.7	Iran	51.6	57.1	50.0
Singapore	65.5	68.2	64.2	Greece	50.3	67.3	43.2
United States	60.8	68.9	56.7	Lithuania	48.8	57.6	44.2
Germany	60.1	63.8	58.5	Switzerland	45.2	52.6	41.6
Hong Kong	60.1	65.4	57.9	Romania	42.0	56.7	40.4
South Korea	59.0	63.5	56.4	Japan	35.1	45.0	25.4
Russia	58.8	65.3	54.0	Guatemala	33.4	40.0	24.8
China	58.4	64.7	54.9	Malta	33.3	45.9	28.8
India	56.3	59.1	54.8	Venezuela	28.3	40.9	19.3
Great Britain	55.0	62.3	53.6	Belgium	23.0	27.8	21.5
New Zealand	54.4	51.3	55.4	Israel	23.0	23.8	22.7
Australia	53.2	57.7	52.1	Portugal	20.8	27.7	16.9
Canada	51.7	55.2	50.2	Brazil	19.3	25.0	16.4

CP40

QUESTION 1b: HOW PREVALENT IS NEGLECT BY PARENTS IN THE LIFE HISTORY OF UNIVERSITY STUDENTS?

Measured by Neglect History scale* Of the Personal and Relationships Profile

Cognitive needs

- My parents helped me with homework if I needed help* (R)
- My parents did not help me to do my best in school

Emotional needs

- My parents did not comfort me when I was upset
- My parents helped me when I had problems (R)

Physical needs

- My parents gave me enough clothes to keep me warm (R)
- My parents did not keep me clean

Supervisory Needs

- My parents made sure I went to school* (R)
- My parents did not care if I got into trouble in school

Alpha: Males = .69, Females = .71, Total = .71

* As used in the International Dating Violence Study. See

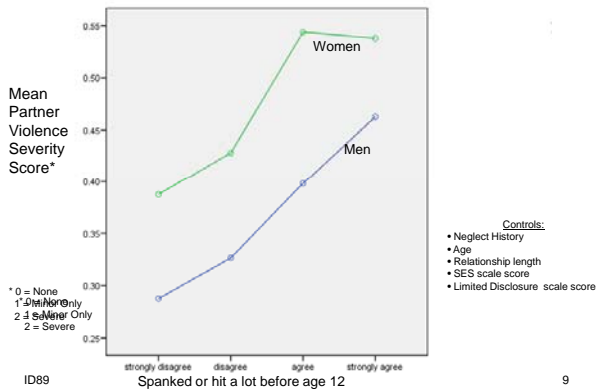
<http://pubpages.unh.edu/~mas2> for revised version

PRscales

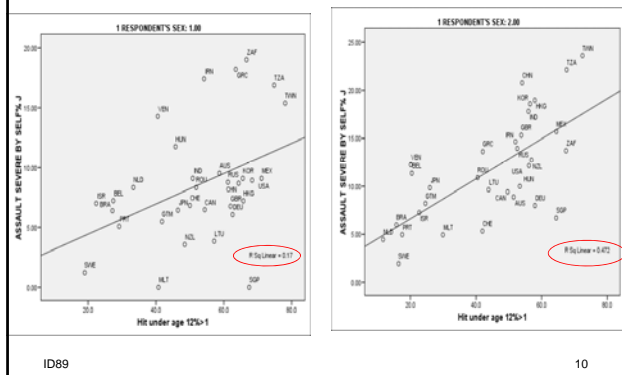
7

NEGLECT TOTAL MEAN							
In rank order of national context (NHITM: 1)							
Median: Total = 1.6, Males = 1.7, Females = 1.6, F% of M = 94%							
High Half Of Nations			Low Half Of Nations				
	Total	Male	Feml	Total	Male	Feml	
South Korea	2.1	2.0	2.1	Switzerland	1.6	1.6	1.6
China	1.9	2.0	1.9	India	1.6	1.7	1.5
China-Hong K	1.9	2.0	1.9	Israel	1.6	1.7	1.6
China-Taiwan	1.9	2.0	1.9	Mexico	1.6	1.7	1.6
Greece	1.8	2.0	1.7	Portugal	1.6	1.7	1.6
Lithuania	1.8	1.9	1.8	Australia	1.5	1.6	1.5
Romania	1.8	1.8	1.8	Canada	1.5	1.6	1.5
Singapore	1.8	1.8	1.7	Guatemala	1.5	1.6	1.5
Brazil	1.7	1.8	1.6	Hungary	1.5	1.5	1.5
Germany	1.7	1.7	1.7	Malta	1.5	1.5	1.5
Iran	1.7	1.8	1.7	Netherlands	1.5	1.6	1.5
Japan	1.7	1.8	1.7	New Zealand	1.5	1.6	1.4
Russia	1.7	1.7	1.7	Sweden	1.5	1.5	1.5
Tanzania	1.7	1.7	1.7	United States	1.5	1.6	1.5
South Africa	1.7	1.9	1.6	Venezuela	1.5	1.6	1.5
Belgium	1.6	1.7	1.5	Great Britain	1.4	1.5	1.4

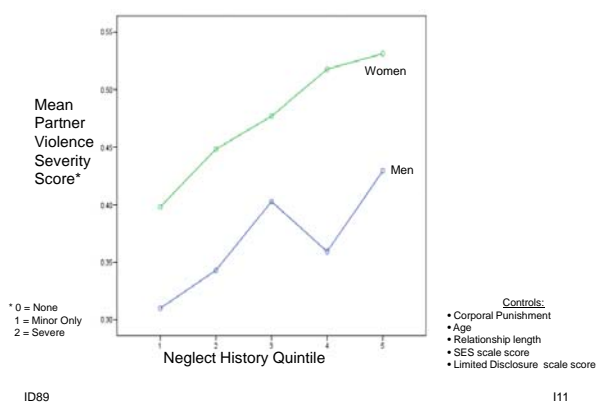
QUESTION 2a. IS CORPORAL PUNISHMENT ASSOCIATED WITH AN INCREASED PROBABILITY OF PARTNER VIOLENCE?



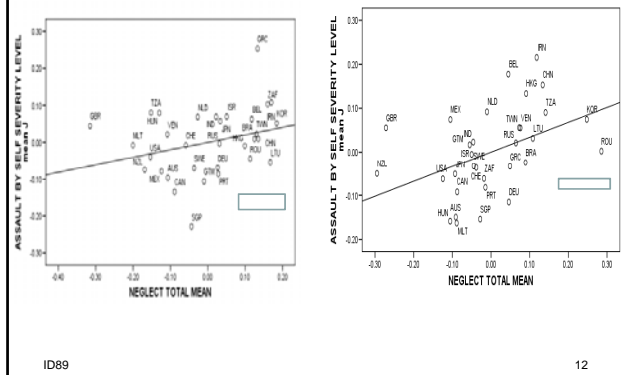
NATIONS WHERE MORE PARENTS USE CORPORAL PUNISHMENT TEND TO BE NATIONS WHERE MORE STUDENTS HIT DATING PARTNERS



QUESTION 2b. IS NEGLECT ASSOCIATED WITH AN INCREASED PROBABILITY OF PARTNER VIOLENCE?



NATIONS WHERE MORE PARENTS ARE NEGLECTFUL TEND TO BE NATIONS WHERE MORE STUDENTS HIT DATING PARTNERS



Question 3: Is the link between these two risk factors and partner violence (PV) mediated by antisocial personality symptoms?

**ANTISOCIAL PERSONALITY SYMPTOMS SCALE
Of the Personal and Relationships Profile***

Deceit

- I often lie to get what I want
- I lie to make myself look better
- I often break things that belong to others on purpose
- I often do things that are against the law
- I often do things that other people think are dangerous
- I have trouble following the rules at work or in school
- I don't think about how what I do will affect other people
- I only treat people badly if they deserve it
- I feel sorry when I hurt someone (Reverse scored)

Impulsive/Rule Breaking

Mistreatment of Others

Alpha: Males = .67, Females = .70, Total = .71

* For information on this instrument see <http://pubpages.unh.edu/~mas2>

PRscales

13

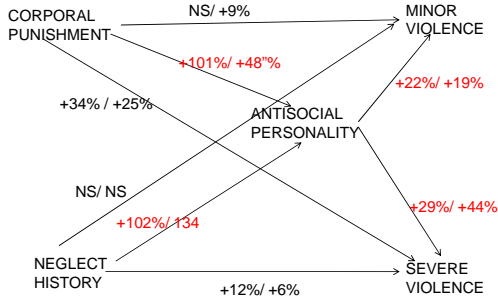
ANTISOCIAL TOTAL MEAN RS

In rank order of national context (ASPT1MR, 1)

Median: Total = 20.1, Males = 30.3, Females = 23.2, F% of M = 77%

High Half Of Nations				Low Half Of Nations			
	Total	Male	Feml		Total	Male	Feml
South Korea	35.9	36.5	35.5	Portugal	24.7	29.6	22.1
Russia	34.4	37.4	32.4	Germany	24.6	28.0	23.1
China -Taiwan	33.1	35.6	32.2	Great Britain	24.5	31.3	23.3
China	31.4	33.4	30.3	United States	24.1	30.2	21.2
Lithuania	31.4	35.6	29.3	Israel	23.6	29.4	22.3
India	31.2	32.7	30.5	Malta	22.9	26.6	21.9
Tanzania	31.0	31.4	30.5	Canada	22.8	28.7	20.5
Japan	30.1	32.8	27.6	New Zealand	22.5	26.9	21.3
Mexico	29.4	34.6	28.2	Australia	22.2	26.5	21.2
Iran	28.4	30.7	27.7	Hungary	22.2	25.7	20.4
China-Hong K	28.3	30.4	27.5	Venezuela	22.2	26.8	19.2
Guatemala	27.5	31.4	23.0	Switzerland	21.1	24.9	19.6
Greece	26.8	34.5	24.2	Romania	21.0	27.3	20.3
South Africa	26.8	38.0	25.6	Belgium	20.1	26.0	18.3
Brazil	26.0	30.6	23.9	Sweden	16.2	25.4	13.3
Singapore	25.8	28.2	24.7	Netherlands	14.7	20.9	13.7

QUESTIONS 4: IS THE RELATION OF CORPORAL PUNISHMENT AND NEGLECT TO PARTNER VIOLENCE MEDIATED BY ANTISOCIAL PERSONALITY?



Left number is the percent by which corporal punishment increases the probability of partner violence by men; right is the percent for women
 * Percentages are based on odds ratios from logistic regression controlling for age, length of relationship, CP72 socioeconomic status, and score on a social desirability response bias scale. ASP is 5th quintile.

CP72

15

CONCLUSIONS

CORPORAL PUNISHMENT AND NEGLECT ARE

- A more pervasive problem than it is usually believed
- Occur in both developed and underdeveloped countries
- Occur among privileged as well unprivileged sectors of those countries
- Both are associated with physical violence toward a dating partner
- The relation is partly mediated by the increase in antisocial personality associated with CP and Neglect

ID13

16

QUESTION 5. WHAT ARE THE POLICY AND PRACTICE IMPLICATIONS?

- Prevention programs to reduce corporal punishment and sub-clinical neglect could result in a substantial reduction in PV because:
- Corporal punishment and sub-clinical neglect are experienced by a large proportion of children
- Therefore, despite the low "effect size," reducing these two risk factors can have greater potential for reducing PV than reducing risk factors which have a much higher effect size, but are much less prevalent.
- Results apply to both men and women and world-wide
- Like results of other epidemiological research, need to be followed by
 - ~ Randomized trials to test efficacy of the intervention,
 - ~ Translational research to test real-world effectiveness

ID89

17

CUMULATIVE EFFECT CAN BE LARGE EVEN THOUGH EFFECT SIZE IS SMALL

- A RISK FACTOR THAT INCREASES THE PROBABILITY OF A PROBLEM BY ONLY A SMALL AMOUNT (SUCH AS SPANKING)
- CAN HAVE A MUCH GREATER IMPACT ON PUBLIC HEALTH THAN A RISK FACTOR THAT INCREASES THE PROBABILITY OF A PROBLEM BY A LARGE AMOUNT
- IT APPLIES TO A LARGER PART OF THE POPULATION THAN A RISK FACTOR THAT, IF PRESENT, INCREASES THE PROBABILITY OF A HARMFUL EFFECT BY A LARGE AMOUNT (SUCH AS PHYSICAL ABUSE) BUT WHICH APPLIES TO A SMALL NUMBER OF PEOPLE (ROSE 1985; ROSENTHAL 1984).
- EPIDEMIOLOGICAL STUDIES SUGGEST THAT IN ANY ONE YEAR, 50 MILLION US CHILDREN EXPERIENCE CP AND 1 MILLION EXPERIENCE PHYSICAL ABUSE.
- ASSUME THAT THE PROBABILITY OF BEING DEPRESSED AS AN ADULT IS INCREASED 25% FOR CHILDREN WHO ARE PHYSICAL ABUSED AND BY ONLY 2% FOR CHILDREN WHO EXPERIENCE CP.
- ASSUME THAT THE PROBABILITY OF BEING DEPRESSED AS AN ADULT IS INCREASED 25% FOR CHILDREN WHO ARE PHYSICAL ABUSED AND BY ONLY 2% FOR CHILDREN WHO EXPERIENCE CP.
- BASED ON THESE ASSUMPTIONS, IF PHYSICAL ABUSE WERE TO BE ENDED, THE REDUCTION IN CASES OF DEPRESSION WOULD BE 0.25 TIMES 1 MILLION OR 250,000. IF CP WERE TO BE ENDED, THE REDUCTION IN CASES OF DEPRESSION WOULD BE 0.02 TIMES 50 MILLION, OR 1 MILLION. THUS ENDING CP WOULD BE ASSOCIATED WITH A FOUR TIMES GREATER DECREASE.

ID89

8-Jan-03, Page 1

18

THESE ARE "RISK FACTORS," NOT ONE-TO-ONE LINKS

- A CONDITION WHICH INCREASES THE **PROBABILITY** OF A DISEASE OR PROBLEM
- EXAMPLES:
 - SMOKING AND DEATH FROM SMOKING RELATED DISEASE (33% chance of death from a smoking related disease – which means that 64% do not)
 - FREQUENT SPANKING AND HITTING A DATING PARTNER (28% chance - 4 fold increase, but 72% of those spanked at lot do not hit partner)
 - BINGE DRINKING AND WIFE BEATING (19% chance - 3 fold increase, but 81% of binge drinkers do not beat their wives)

ID89

19

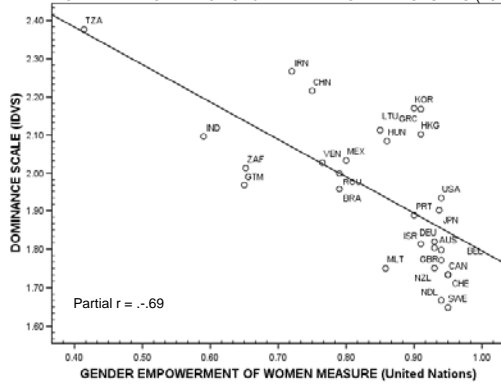
SOME REFERENCES

- Douglas, E. M., & Straus, M. A. (2006). Assault and injury of dating partners by university students in 19 countries and its relation to corporal punishment experienced as a child. *European journal of criminology*, 3(3), 293-318.
- Straus, M. A. (2001). *Beating the devil out of them: Corporal punishment in American families and its effects on children, 2nd edition* (2nd ed.). New Brunswick, NJ: Transaction Publishers.
- Straus, M. A. (2004). Cross-cultural reliability and validity of the revised conflict tactics scales: A study of university student dating couples in 17 nations. *Cross-Cultural Research*, 38(4), 407-432.
- Straus, M. A., & Gelles, R. J. (1990). *Physical violence in American families: Risk factors and adaptations to violence in 8,145 families*. New Brunswick, NJ: Transaction Press.
- Straus, M. A., & Medeiros, R. A. (2007 in press). *The primordial violence: Corporal punishment by parents, cognitive development, and crime*. Walnut Creek, CA: Alta Mira Press.
- Straus, M. A., & Ramirez, I. L. (2004). Criminal history and assaults of dating partners: The role of type of prior crime, age of onset, and gender. *Violence & Victims*, 19(4), 413-434.
- Straus, M. A., & Savage, S. A. (2005). Neglectful behavior by parents in the life history of university students in 17 countries and its relation to violence against dating partners. *Child Maltreatment*, 10(2), 124-135.
- Straus, M. A., Hamby, S. L., Boney-McCoy, S., & Sugarman, D. (1999 (Revised 2007)). Manual for the Personal and Relationships Profile (PRP). Durham, NH: University of New Hampshire, Family Research Laboratory. Available in: <http://pubpages.unh.edu/~mas2>
- Straus, M. A. (2006). Cross-cultural reliability and validity of The Multidimensional Neglectful Behavior Scale Adult Recall Short Form. *Child Abuse & Neglect*, 30, 1257-1279.
- Straus, M. A. (2007). Validity of Cross-National Research Based on Convenience Samples: The Case of the International Dating Violence Study Data. In *Violence against dating partners in world perspective: The International Dating Violence Study*. Durham, NH: Family Research Laboratory, University of New Hampshire. <http://pubpages.unh.edu/~mas2>
- Straus, M. A. (2007). Dominance and asymmetry in partner violence by male and female university students in 32 nations. *Children and Youth Services Review*.

ID89

20

VALIDITY OF IDVS DATA: THE HIGHER THE EMPOWERMENT OF WOMEN IN A NATION, THE LOWER THE DOMINANCE OF MEN IN DATING RELATIONSHIPS (29 Nations)



21